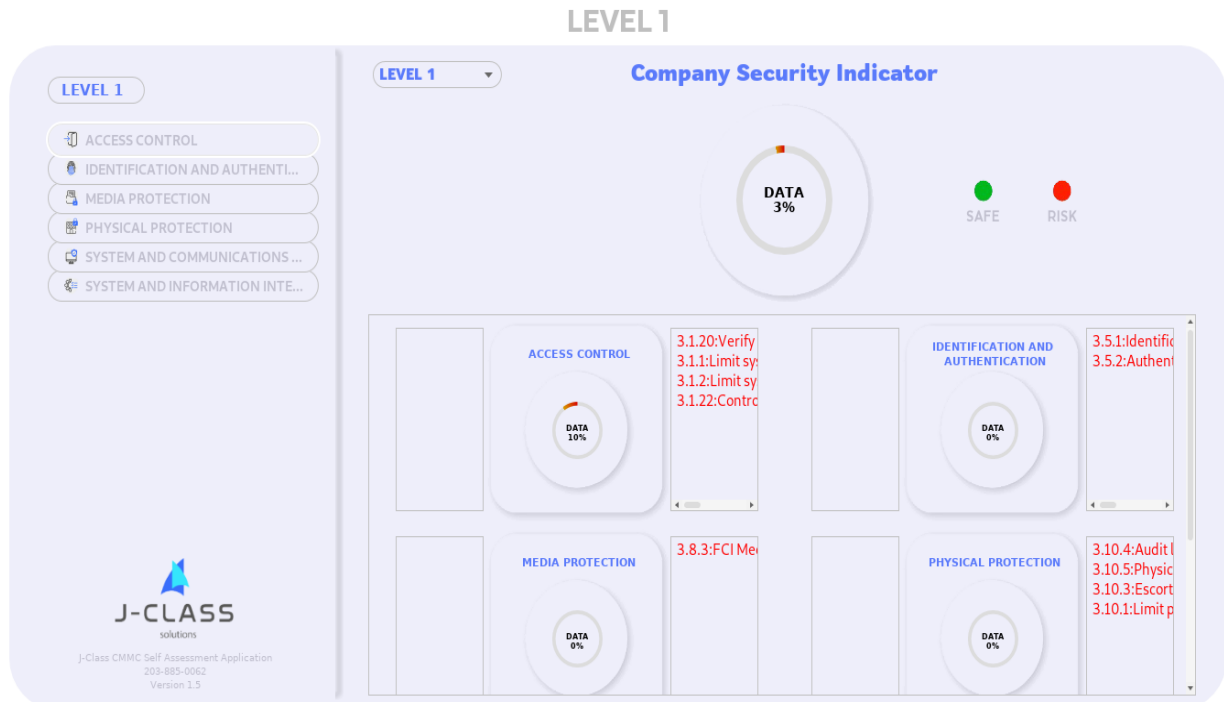


CMMC SELF ASSESSOR APPLICATION

File Company Report About Help



1. Prerequisites

To run the CMMC Self Assessor application, you should download Java and install it. Visit <https://www.java.com/en/download/manual.jsp> to download the Java software according to your operating system.

2. How to run the CMMC Self Assessor .jar file

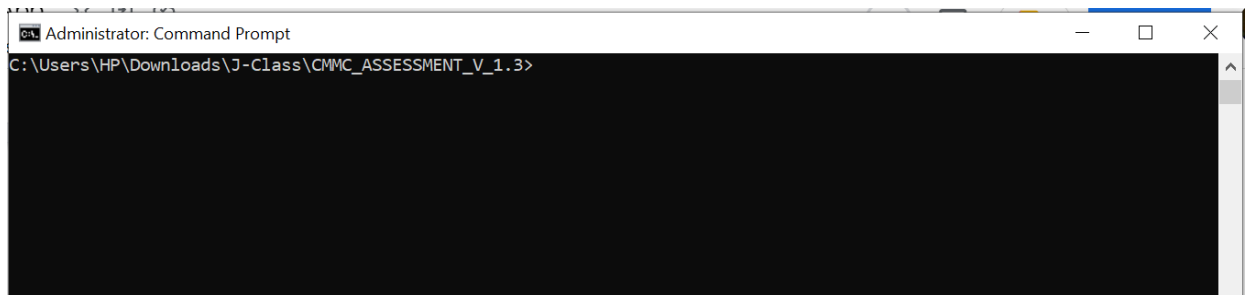
Method: 1

Once you have downloaded and installed the **JAVA** application, extract the files and double click on the application to run

Method 2: Terminal command

Navigate to **CMD > Right-click** on it and **> Run as Administrator > Navigate** to the location where you download the CMMC Self Assessor application.

e.g., if the application is located in your Download directory you can navigate to the directory using the following command in the image below



Below is the command for running the application

java -jar CMMC_ASSESSMENT_**Version.jar**

The application's version number will keep changing when new updates are released.

3. CMMC Self Assessor Dashboard

In this Dashboard, you will find domains for Level 1 and with the option to select a different Level in order to display its domains. To access the controls, click on a domain name and it will display all the information in it.



4. How to put the data in the data fields

Navigate to a domain i.e “**Access Control**” and double click on it. It will bring up a screen as shown below.

3.1.1 Description: Limit system access to authorized users, processes acting on behalf of authorized users, and devices (including other systems).

3.1.1[a] Are authorized users are identified?

Yes No

Process

Process Owner

Technology

Internal Note

Upload Evidence Screenshot

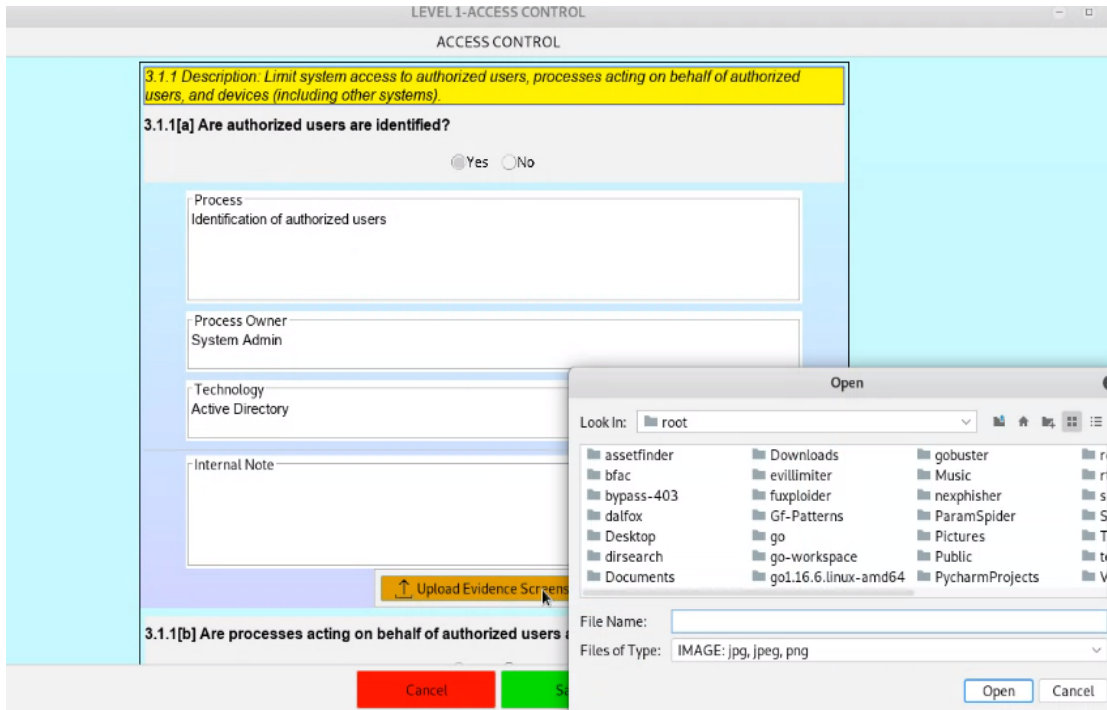
3.1.1[b] Are processes acting on behalf of authorized users are identified?

Cancel Save

- **Process:** In this section, provide a summary description of how you have implemented a particular control requirement.
- **Process Owner:** In this section, provide the name role of the person who has been assigned the control. i.e System Administrator
- **Technology:** In this section, provide the name of the solution/tool/software that is being used to implement a particular control.
- **Internal Notes:** This section is for noting down notes, ideas for internal use only.
- **Upload Evidence Screenshot:** Screenshot provides evidence of control being implemented.

5. How to Upload Evidence Screenshot

Click on the upload evidence screenshot button, navigate to where the image has been stored and upload.

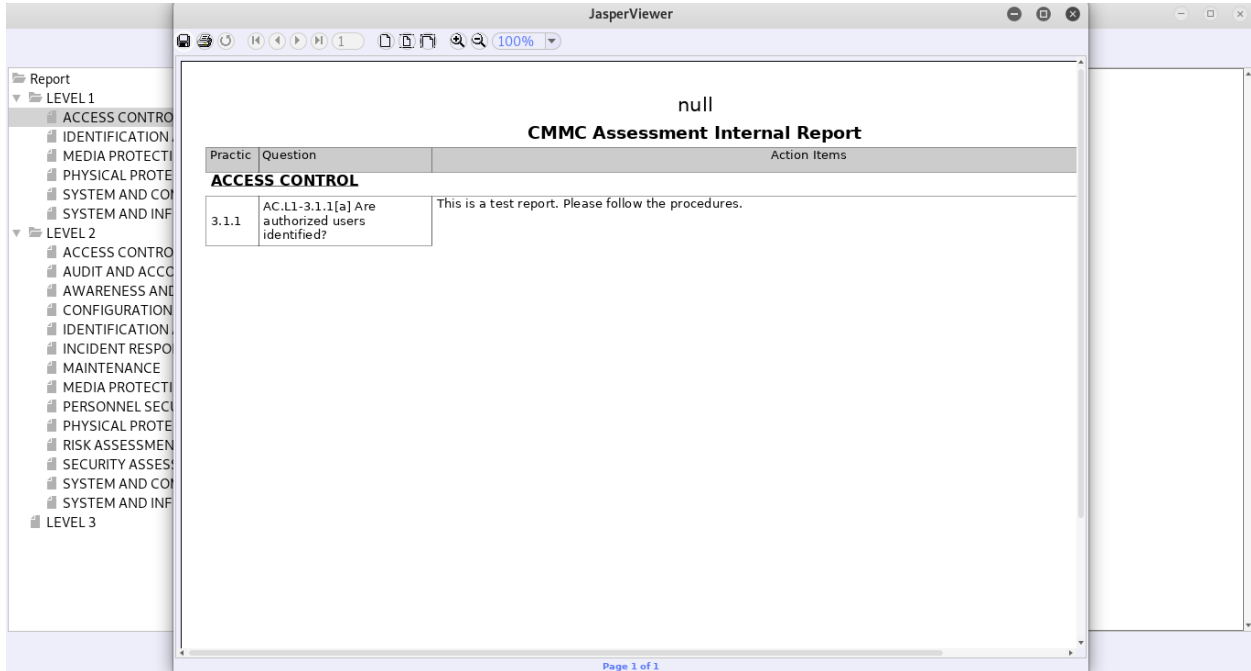


6. Report

In the report tab, you will find Internal report, external report and log report. Internal report prints out the information captured in the internal notes section of each control, while the external report prints out the information captured on the process, process owner, technology fields and the evidence screenshot uploaded. Log report captures and shows the changes that have been made in each control's data fields.

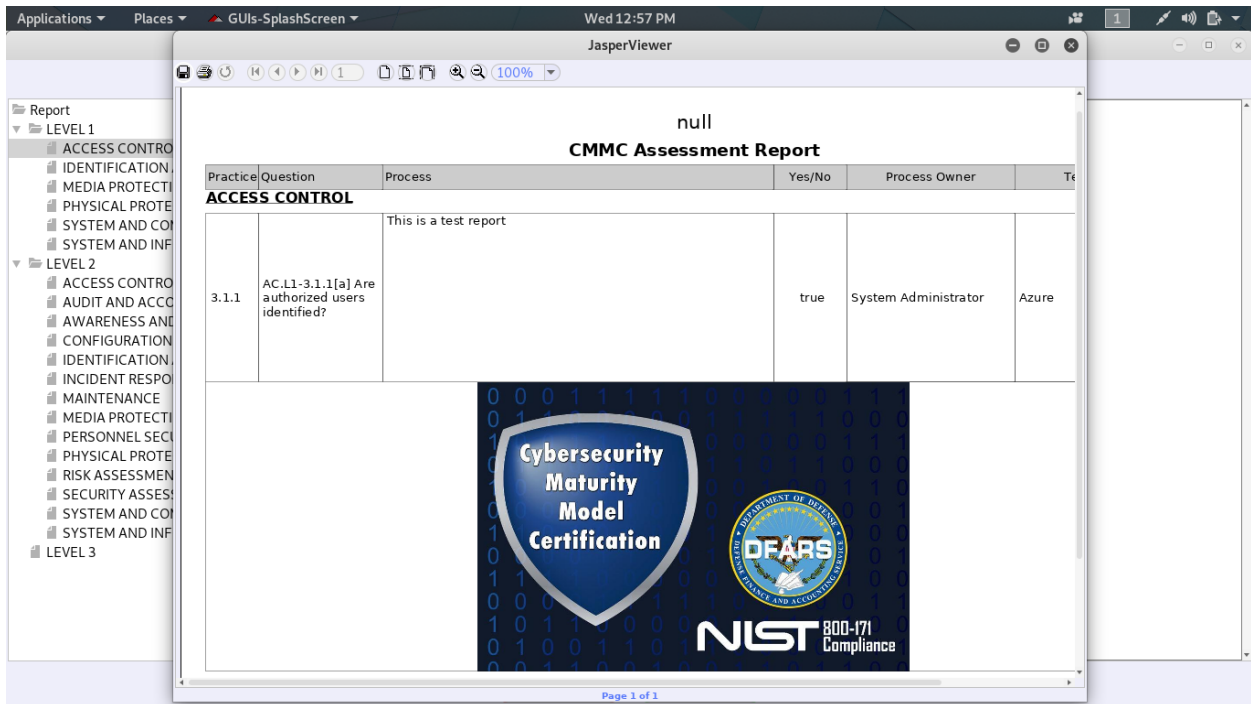
Internal Report

To generate an internal report, click on the Report tab and select Internal Report. Choose the level and select the domain(s) that you would like to print the report from and click print report. The screenshot below shows the internal report sample.



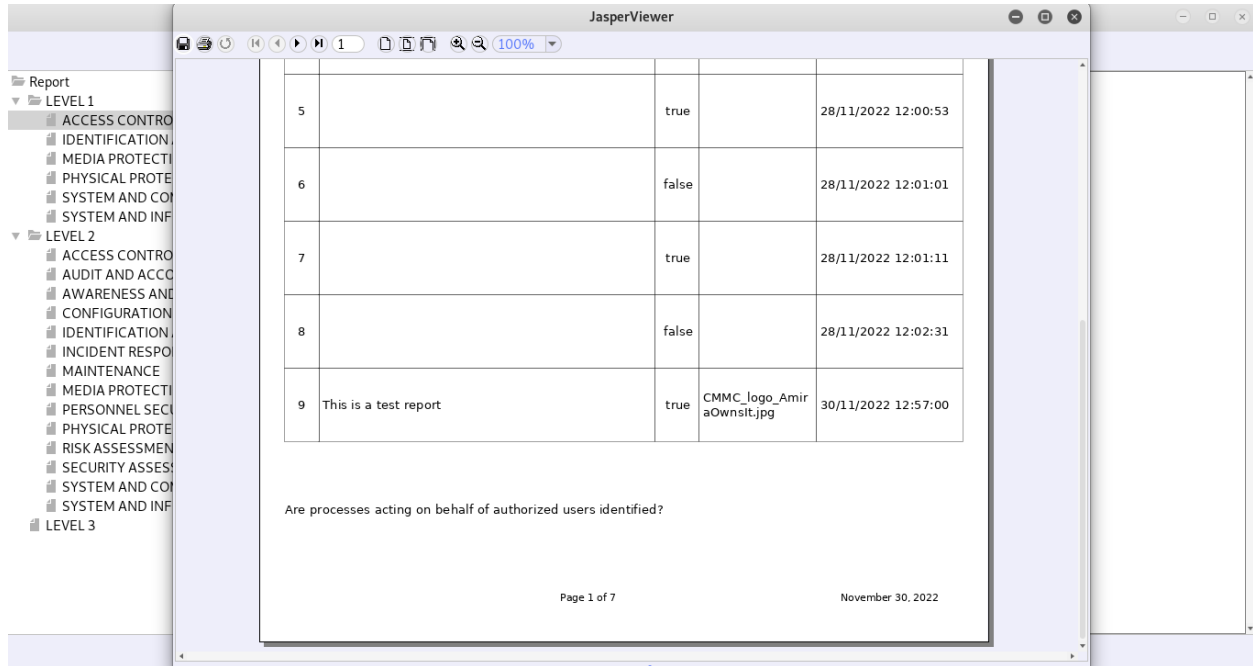
External Report

To generate an external report, click on the Report tab and select External Report. Choose the level and select the domain(s) that you would like to print the report from and click print report. The screenshot below shows the external report sample.



Log Report

To generate a log report, click on the Report tab and select Log Report. Choose the level and select the domain(s) that you would like to print the report from and click print report. The screenshot below shows the log report sample.



7. Company

In this Company tab, you will fill in the name of the company and its address then save it. Navigate to the Company tab, click on **Create/Edit** and the screen below will appear.

